




---

# MEMBERSHIP BROCHURE

# Why join ICLEI Africa?

The immense, interconnected urban sustainability challenges our world, and our continent in particular, currently face need to be tackled in an integrated, inclusive way with tenacity, boldness and proven expertise.

**Our ICLEI Africa cities and regions are doing just that.**




**They are BRAVE,** tackling difficult, complex, interconnected sustainability issues head on and applying creative problem solving and cutting edge, innovative solutions, appropriate for our African context.



**They are AGILE,** embracing reflection and learning, and harnessing African excellence, in order to quickly adapt and evolve in response to changing circumstances and better serve their communities.



**They are COMMITTED,** working tirelessly with their citizens and our vast, robust network of cities and partners, to accelerate and strengthen sustainability action, and drive change.



**They are KIND,** a strength in our current reality, understanding and empowering their citizens, and sharing knowledge and best practices with each other to build resilience and create a better future for everyone.

**If your city identifies with or aspires to these qualities, is serious about sustainability and wants to collaborate with leading cities across Africa and globally, join ICLEI Africa today!**

These characteristics are mirrored in our **ICLEI Africa Secretariat**, where we serve and support these frontrunner cities and regions in Africa, with our growing **team of passionate multi-talented experts** and strong network of partners.

**ICLEI has put 'urban' firmly on the sustainability agenda**, working with and effectively advocating for local and subnational governments in the global arena for over 30 years.

At ICLEI Africa, we work **across the various development agendas**, aligning with African and global policies, and contextualising our work within the realities of our continent. We **reach over 450 cities and regions**, influencing sustainability policy and driving local action for low emission, nature-based, equitable, resilient and circular development.

#### And if you are still not convinced...

- **ICLEI is the largest and oldest global association** of cities and subnational governments **dedicated to sustainable development.**
- **We work with all cities and regions**, large and small, remote or well-connected, **no matter where they are on their sustainability journey.**
- **We co-produce projects** with our cities and modify **actions based on real needs.**
- **We work with cities to optimise finance for sustainability**, while also seeking new funding.
- **We are a trusted partner** and have built **long-standing relationships with a vast network of partners and cities.**
- **We are dedicated** to facilitating the right connections to **strengthen action and drive change.**



# As an ICLEI Member, you have access to a wide range of benefits

## 1 GET CONNECTED

Take advantage of discounted participation in ICLEI events, such as our [Local Climate Solutions for Africa](#) congress series and ICLEI World Congress.

Access grant and travel funding within ICLEI projects and programmes and connect with the ICLEI network around the world.

Engage in global processes and platforms, including those of the United Nations.

Connect, share and learn from other cities and regions through joining initiatives supported or hosted by ICLEI, such as [CitiesWithNature](#), [RegionsWithNature](#), the [Covenant of Mayors in Sub-Saharan Africa](#) and [Cities Race to Resilience](#).



## 2 GET INFORMED

Stay up to date with the latest information, ideas and technical advancements that shape the sustainability landscape.

Participate in regular webinars, as well as courses on our [Learn With ICLEI Africa](#) platform, that cover your particular areas of interest.

Access technical reports, case studies and guidebooks.

Get global news updates, thematic newsletters and advocacy updates.

## 3 GET RESOURCES

Tap into diverse knowledge and skills, by working alongside our technical teams from around the world.

Make use of ICLEI's leading tools, reporting platforms, methodologies and associated support to achieve your sustainability goals.

Learn more about some of the programmes and projects run by our multidisciplinary teams.

## 4 GET INVOLVED

Vote and elect the political representatives that define the global strategic direction of the entire network.

Apply to participate in our governance boards that define our strategic direction and include global leadership and advocacy positions.

## 5 GET FEATURED

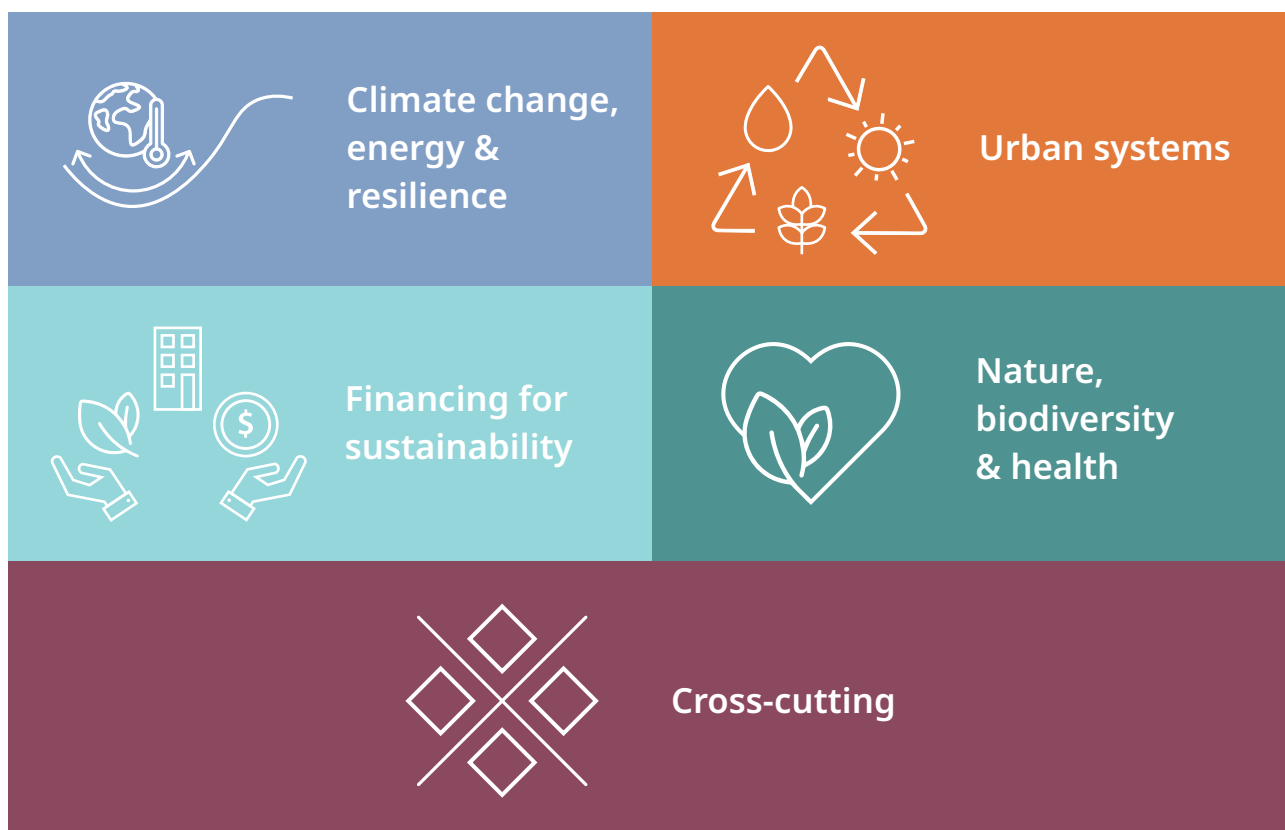
Host a global or regional event in your city that attracts a range of city leaders, experts, implementing partners and the media.

Have your city and sustainability achievements profiled in our newsletters, at events, and via our social media channels.

Participate in our campaigns such as **African City Food Month** and **African Mobility Month** to amplify your sustainability work and achievements.



# In addition to these benefits, we also offer a number of additional paid services, as outlined below



## Capacity building and training (online/in-person):

- Climate change 101: Why tackling climate change is essential in cities
- How to build climate resilience in coastal cities
- How to enhance disaster preparedness via city planning
- How to enable multi-level governance for the achievement of climate-resilient development
- Climate finance: Navigating how to access climate finance and/or utilise existing finance for climate action; from project idea to spade in the ground
- How to utilise urban natural assets to build climate resilience
- How to mainstream nature-based solutions that build climate resilience within city planning and decision-making

- Identifying nature's contributions to people (NCP) and using NCP to create and build better cities
- Local Biodiversity Strategy and Action Plan (LBSAP) development and ensuring vertical integration with National Biodiversity Strategy and Action Plans (NBSAPs)
- Cities' Biodiversity Index (2-part course: Introduction to the CBI and Deep Dive)
- Understanding urban food systems governance and management
- How to apply circular economy principles for inclusive and sustainable urban development
- How to promote integrated solutions through food-water-energy nexus: lessons for governance and financing
- How to approach urban data collection for sustainability monitoring and evaluation
- Communicating for impact: Effective sustainability communications for cities

### **Technical services:**

- Greenhouse gas emissions inventories
- Vulnerability assessments
- Climate change plans – mitigation, adaptation and energy access (includes target setting), in alignment with your country's Nationally Determined Contribution (NDC)
- Ensuring climate change plans comply with global initiatives such as the Global Covenant of Mayors (GCoM) and regional initiatives such as the Covenant of Mayors in Sub-Saharan Africa (CoM SSA)
- Assist cities with reporting climate change actions into global reporting systems, such as the merged CDP-ICLEI reporting platform
- UNDRR Disaster Risk Reduction scorecards
- Disaster Risk Reduction strategies and action plans
- Vehicle emissions reduction strategies
- Food systems policy development
- Circular economy action plan development
- Strategy and implementation plan development for: food-, water-, energy-, waste systems
- Integrated catchment management plan development



- Benchmarking current performance as a water sensitive city/settlement
- Local Biodiversity Strategy and Action Plan (LBSAP) development
- Development of thematic atlas of nature's benefits to the city
- Invasive species control and management plan development
- Assist cities to apply the Cities' Biodiversity Index
- Assist cities to set biodiversity targets and report against these
- Development of local-level indicators for sustainable development monitoring
- SDG localisation processes
- Assist with the development of communications and awareness strategies and campaigns

### Finance services:

- Project/programme enabler support for sustainability projects seeking funding
- Climate finance: Identifying projects and link these projects to potential donors/funders/project preparation facilities

### Membership fees:

ICLEI membership fees are payable on an annual basis. We also offer the option of paying upfront for a discounted 3-year membership, if preferred. We are open to discussing ways in which we can tailor a specific membership package to suit your needs.

### Get in touch with us to discuss your membership options:

✉ [membership.africa@iclei.org](mailto:membership.africa@iclei.org)

 [africa.iclei.org](http://africa.iclei.org)

 [@ICLEIAfrica](https://twitter.com/ICLEIAfrica)

 [ICLEI Africa](https://www.linkedin.com/company/iclei-africa)

Updated May 2022

